

# FREE STANDING DISPLAY - POTFILLER AND FINISH BOARD ASSEMBLY

- 1.** Mount the potfiller hanger. Take the tan block without the routed side and place on inside of display. Line up and cover the four holes on inside.

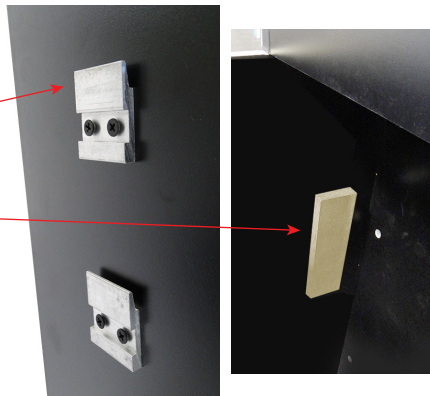
4 HOLES



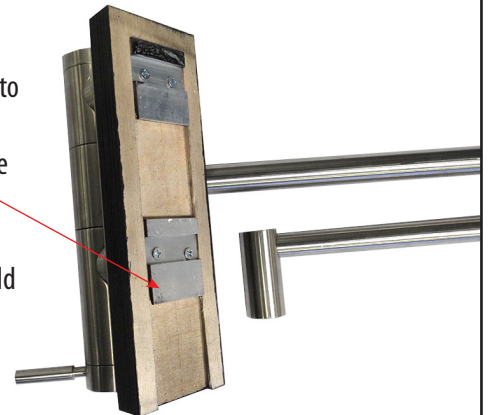
OUTSIDE HOLES



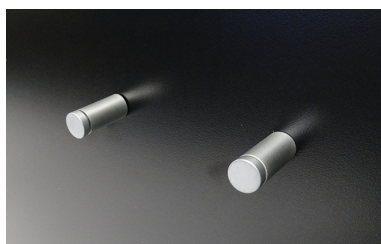
- 2.** Place potfiller brackets to outside with hooks facing up.
- While holding the block on the inside, screw the brackets onto side panel and inside block w/ long screws.



- 3.** Attach the potfiller to black block with small screws. On the routed side, attach brackets with small screws. Hooks should face down. Hang potfiller to side of display.



- 4.** Mount the knobs for the finish display board to front.
- Take small screw and insert into knob base. Using a little screwdriver, attach base to display into upper holes. Once tightened and flat against display, insert bolt. Just hand tighten.



- 5.**
- 

Hang finish board to front of free standing display.