

# CONTEMPORARY SIDE SPRAY VALVE REPLACEMENT

## BEFORE YOU BEGIN YOUR INSTALLATION:

## Contemporary Model # 3025



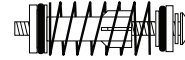
Turn off water supply.

### REQUIRED TOOLS:



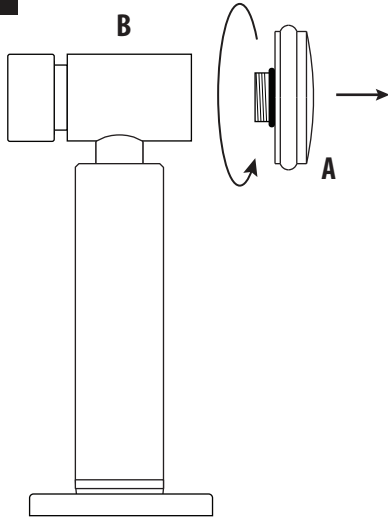
Phillips Screwdriver

### PART INCLUDED:



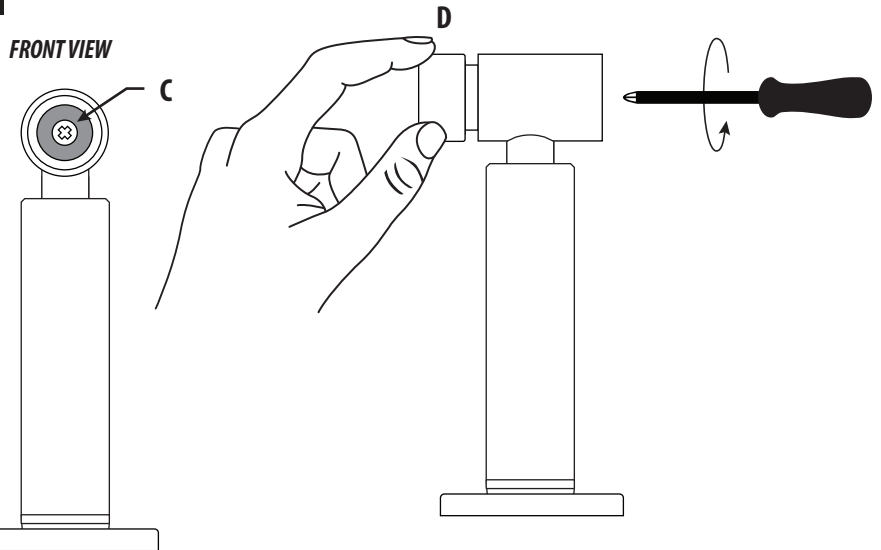
Side Spray Valve

1.



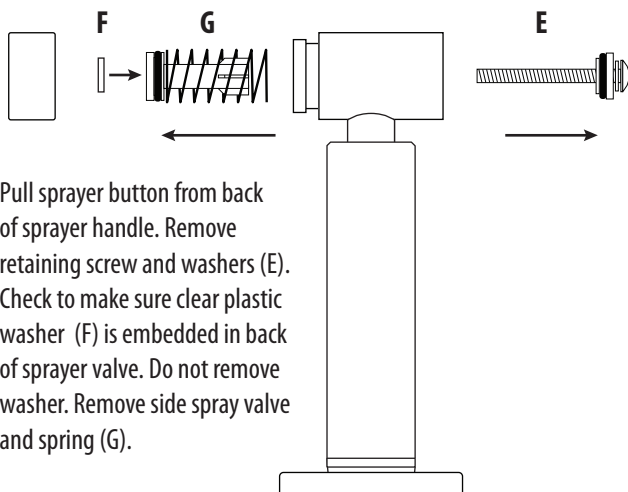
Turn off water supply. Push sprayer button to relieve water pressure. By hand, unscrew and remove spray head (A) from sprayer handle (B).

2.



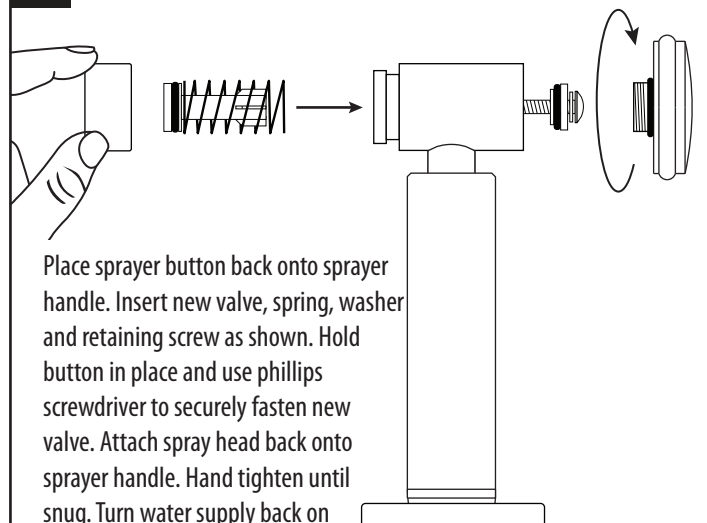
On the inside of the sprayer handle is a phillips retaining screw (C). Hold the sprayer button (D) in place with one hand and loosen the retaining screw with a phillips screwdriver.

3.



Pull sprayer button from back of sprayer handle. Remove retaining screw and washers (E). Check to make sure clear plastic washer (F) is embedded in back of sprayer valve. Do not remove washer. Remove side spray valve and spring (G).

4.



Place sprayer button back onto sprayer handle. Insert new valve, spring, washer and retaining screw as shown. Hold button in place and use phillips screwdriver to securely fasten new valve. Attach spray head back onto sprayer handle. Hand tighten until snug. Turn water supply back on and check for leaks.



# TRADITIONAL SIDE SPRAY VALVE REPLACEMENT

**BEFORE YOU BEGIN YOUR INSTALLATION:**

**Traditional Model # 4025**



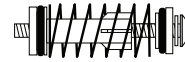
Turn off water supply.

**REQUIRED TOOLS:**



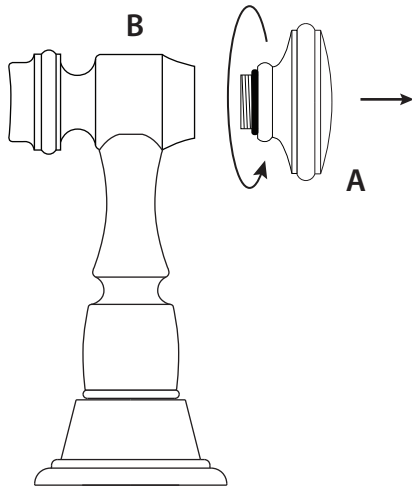
Phillips Screwdriver

**PART INCLUDED:**



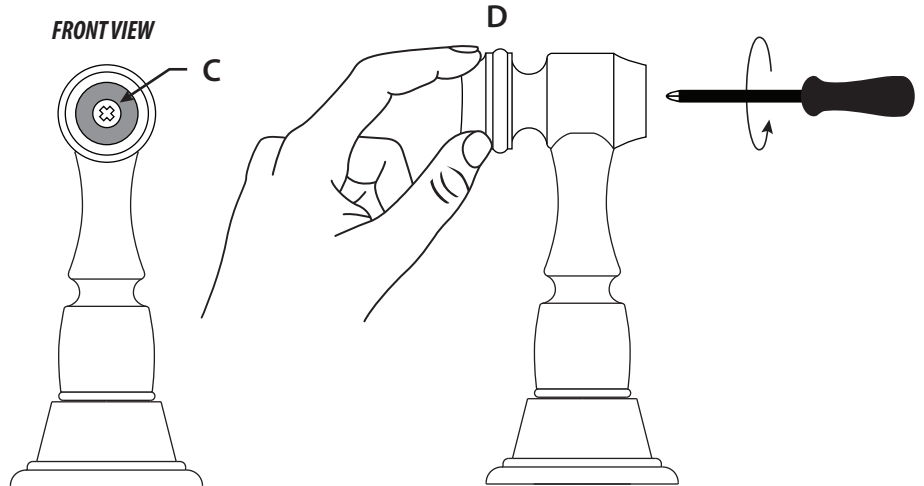
Side Spray Valve

**1.**



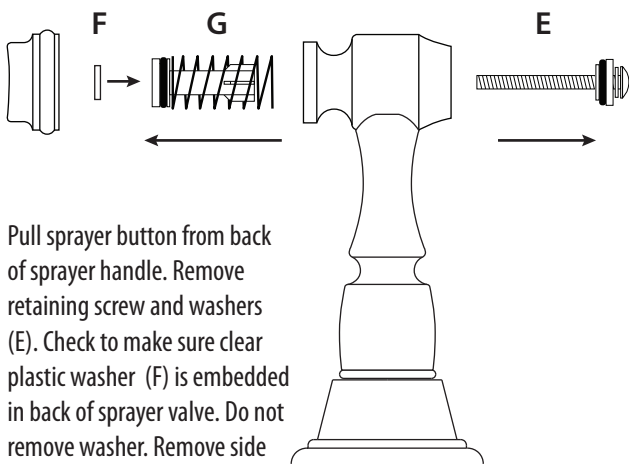
Turn off water supply. Push sprayer button to relieve water pressure. By hand, unscrew and remove spray head (A) from sprayer handle (B).

**2.**



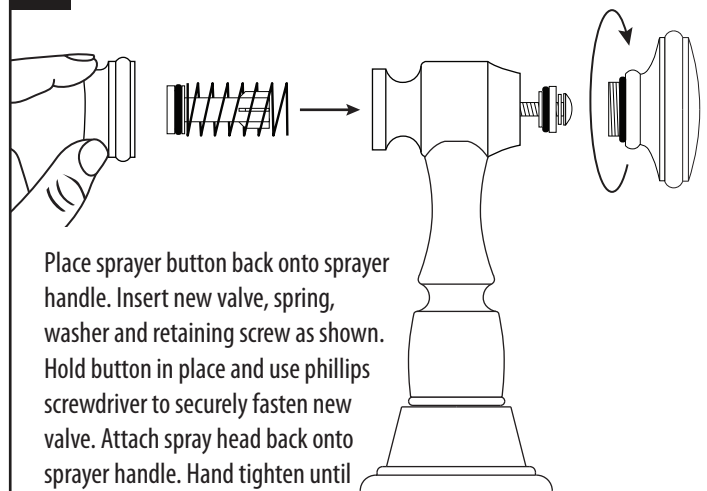
On the inside of the sprayer handle is a phillips retaining screw (C). Hold the sprayer button (D) in place with one hand and loosen the retaining screw with a phillips screwdriver.

**3.**



Pull sprayer button from back of sprayer handle. Remove retaining screw and washers (E). Check to make sure clear plastic washer (F) is embedded in back of sprayer valve. Do not remove washer. Remove side spray valve and spring (G).

**4.**



Place sprayer button back onto sprayer handle. Insert new valve, spring, washer and retaining screw as shown. Hold button in place and use phillips screwdriver to securely fasten new valve. Attach spray head back onto sprayer handle. Hand tighten until snug. Turn water supply back on and check for leaks.