



# KITCHEN, PREP SPOUT AND O-RING REPLACEMENT

**BEFORE YOU BEGIN YOUR INSTALLATION:**

**MODEL #S 3800, 3900, 3825, 3925**



Turn off water supply.

## REQUIRED TOOLS:



1/4" Hex Wrench



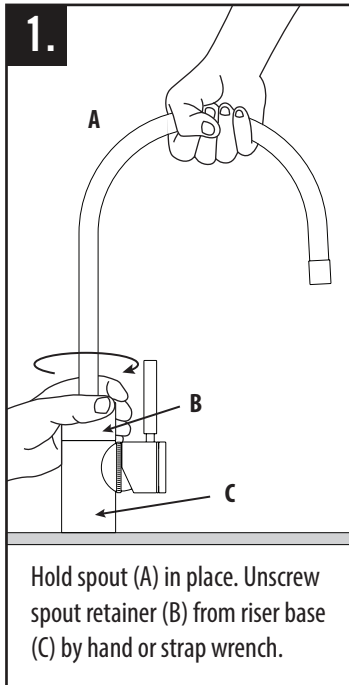
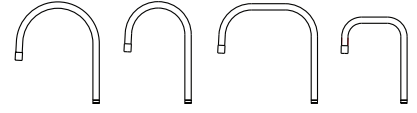
Standard Screwdriver



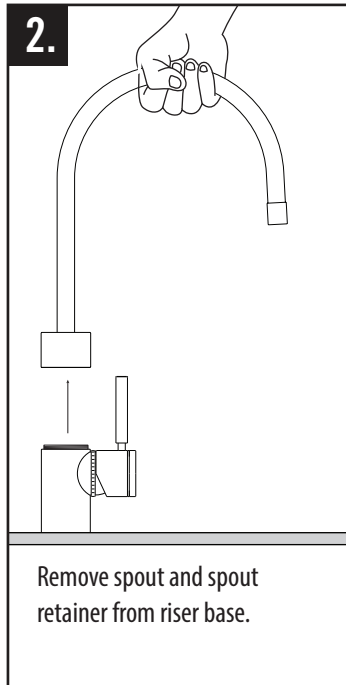
Strap Wrench

## PARTS INCLUDED:

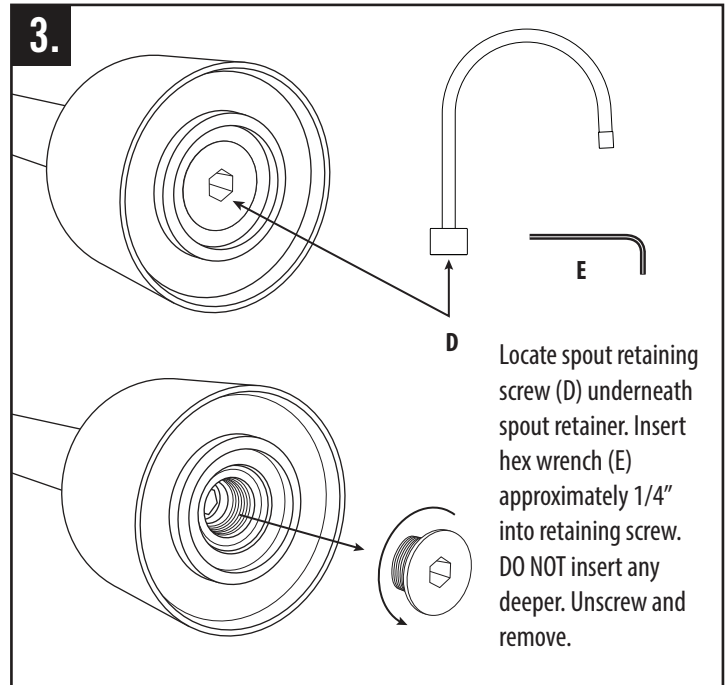
Parche Kitchen or Prep Spout Fulton Kitchen or Prep Spout O-rings



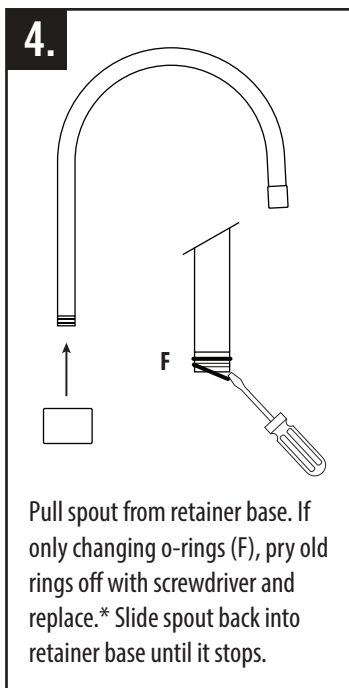
Hold spout (A) in place. Unscrew spout retainer (B) from riser base (C) by hand or strap wrench.



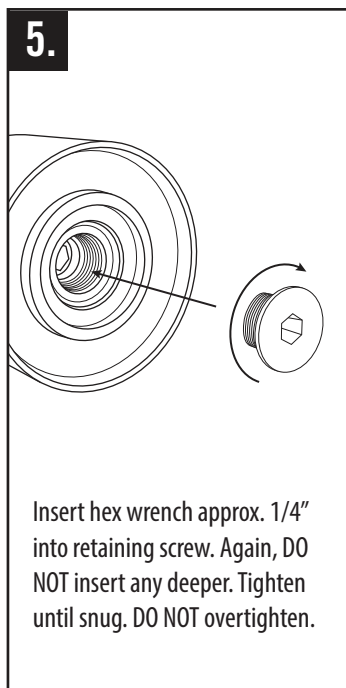
Remove spout and spout retainer from riser base.



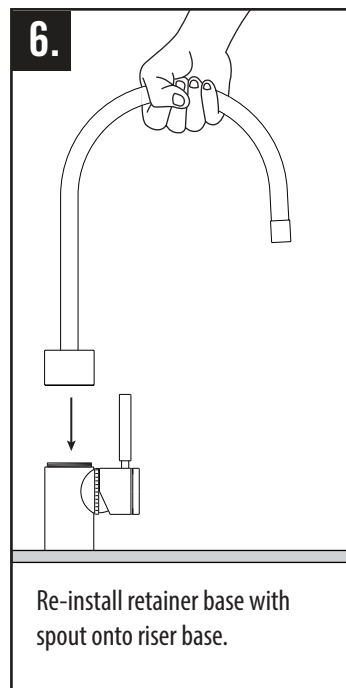
Locate spout retaining screw (D) underneath spout retainer. Insert hex wrench (E) approximately 1/4" into retaining screw. DO NOT insert any deeper. Unscrew and remove.



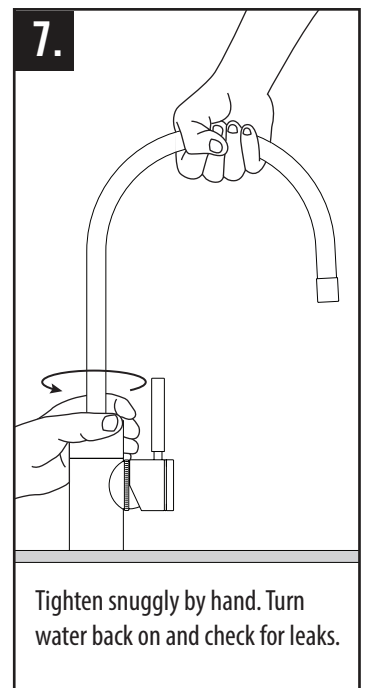
Pull spout from retainer base. If only changing o-rings (F), pry old rings off with screwdriver and replace.\* Slide spout back into retainer base until it stops.



Insert hex wrench approx. 1/4" into retaining screw. Again, DO NOT insert any deeper. Tighten until snug. DO NOT overtighten.



Re-install retainer base with spout onto riser base.



Tighten snugly by hand. Turn water back on and check for leaks.

**\*NOTE: IF REPLACING OLD SPOUT WITH NEW SPOUT, DO NOT REMOVE O-RINGS.**

★ **MADE IN THE USA** ★